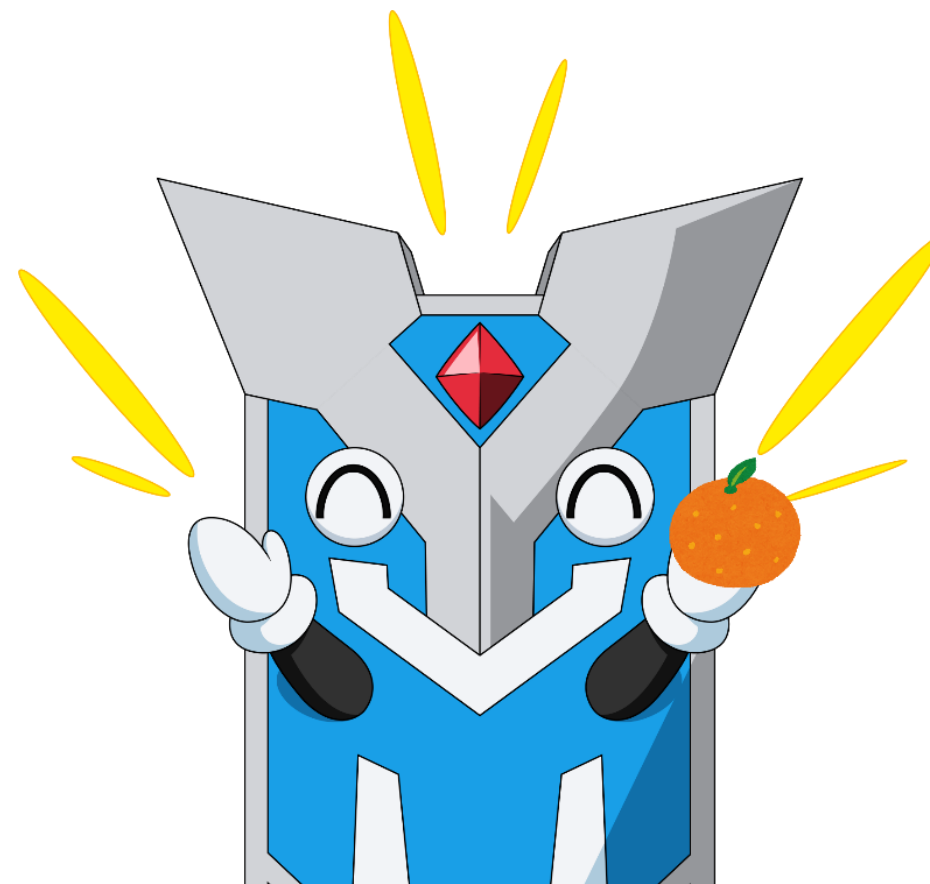
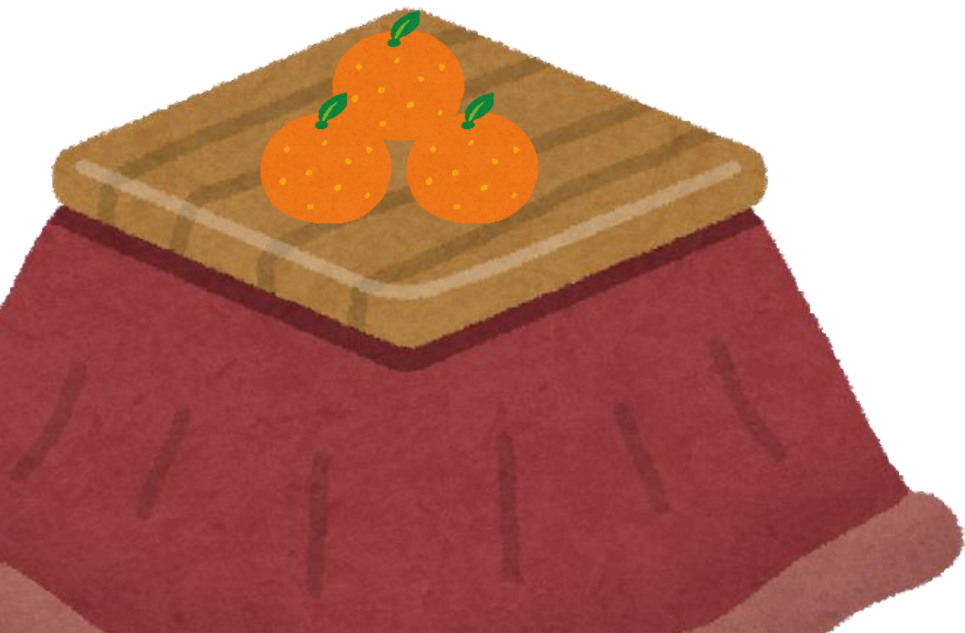


Episode 37

V **G** Weekly Bites





【Jan 2019 Card Restriction Rules Update】

Reasons for cards to be considered for restriction

- Reduces the variety of clans used in tournaments
- Greatly lengthens game duration
- Will greatly affect many of the future cards under development
- Enables unintentional interactions that were not intended by the developers, that are unpleasant and complicated to deal with



【Jan 2019 Card Restriction Rules Update】

In effect starting from Mar.1st!

Standard

As there has been a variety of clans used in BCS 2018, there are no changes to the restrictions.

We will consider restrictions once Link Joker and Bermuda Triangle, and hence, all 24 clans have been released.

※ Next update to Card Restriction Rules will be in Jul 2019

[Jan 2019 Card Restriction Rules Update]

In effect from Mar.1st!

Unrestricted

Premium

Restricted to 1 → Unrestricted



Interdimensional Dragon,
Heteroround Dragon
G-CB04/008 etc.



Tick Tock Worker
G-BT05/101



Steam Battler, Ur-Watar
G-BT05/103 etc.



Mick the Ghostie and Family
G-BT06/094 etc.



【Jan 2019 Card Restriction Rules Update】

In effect from Mar.1st!

Unrestricted

Premium

Restricted to 1 → Unrestricted



In light of the number of Gear Chronicle and Granblue decks throughout BCS 2018, these cards are now unrestricted.

【Jan 2019 Card Restriction Rules Update】

In effect from Mar.1st!

Restricted to 1

Premium



Enigmatic Assassin
G-BT07/093 etc.



Dreamer Dreamer, Kruk
G-CB01/024

- There are many clans that are unable to deal with the Dark Irregulars combo involving “Enigmatic Assassin”, and since it will also affect future card development, as the core of the combo, “Enigmatic Assassin” will be restricted.
- Bermuda Triangle had a very strong showing in BCS 2018, and in consideration of upcoming card releases for the clan, “Dreamer Dreamer, Kruk” will be utilized by almost all decks, and since it will also affect future card development, “Dreamer Dreamer, Kruk” will be restricted.

※ Next update to Card Restriction Rules will be in Jul 2019

IMAGE 37 "INVASION OF THE PSYQUALIA ZOMBIE"



YouTube: <http://www.youtube.com/CARDFIGHTVanguard>

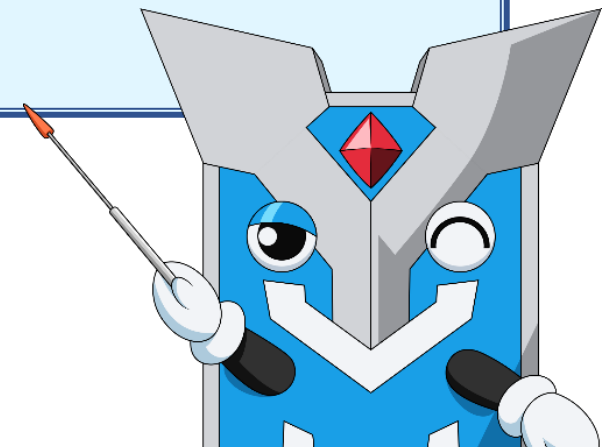
Crunchyroll: <http://www.crunchyroll.com/>

SNEAK PEEKS OF “IMAGE 38”



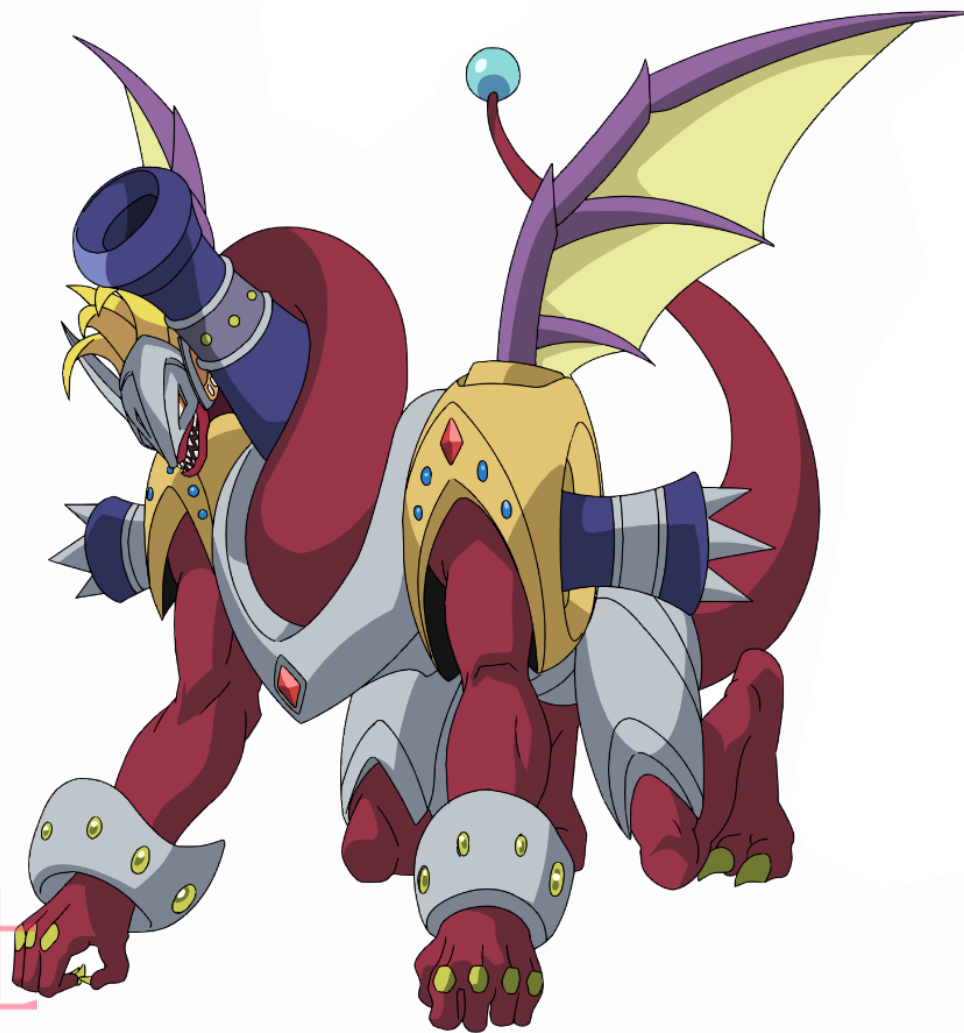
Image 38 “Beyond Imagination!”

Ren fights to return the PSYqualia zombie Asaka back to normal. However, with the power of PSYqualia, Asaka only sees herself defeating Ren as her nightmare.



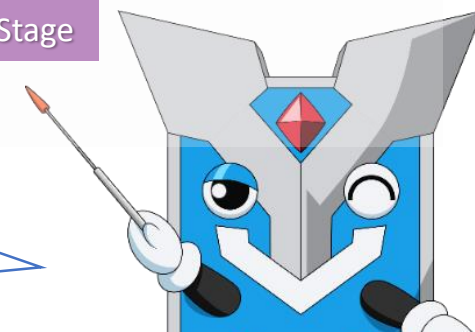
SNEAK PEEK! UNIT SETTINGS!

Gust Blaster Dragon



Gun Salute Dragon, End of Stage

Let's look at the character settings for Gust Blaster Dragon and Gun Salute Dragon, End of Stage!



転載禁止



GUST BLASTER DRAGON

- When it attacks, **draw a card**, your opponent chooses a rear-guard and **retires it**, **this unit gets power +10000!**
- When your rear-guard is retired, this unit gets **critical +1!!**



Vilest! DELETOR

BOOSTER PACK 04

WAVING DELETOR, GREIDHOL

- Opponent's rear-guards **cannot move to other RC!**
- Bind your opponent's rear-guard **face down!**
- **Delete your opponent's vanguard**, and this unit gets **critical +1!**





APOCALYPSE BAT

- When placed on VC, call a card from your soul!
- When placed on RC, call an "Apocalypse Bat" from your soul!

